

## Solar Storms Trigger Earthquake<Natural HAARP? !! >. 2023/06/07,8,9,10

<massive charges trapped on geomagnetic line become hazardous high voltage belt >.

Italian scientist's 20-years observation & statistical analysis revealed strong correlation between solar storms and a day after earthquakes of magnitude 5.6 or higher.

2023 will enter a period of high solar activity, one of the backgrounds for the recent trend of frequent earthquakes in the world. Here, the important thing is that geomagnetic field decreases ( $\sim 450\text{nT}$ ) = increases in the air charge density, and

it enables to predict earthquakes few days later.

*Magnetic Summary Plots - Last 24 hours<Canada Government>*

<https://geomag.nrcan.gc.ca/plot-tracee/ssp-1-en.php>

\*The observatory is Canada, but is used in Japan, will also be available in the world.

See **APPENDIX\_1:The Observatory.**

**Geomagnetism Observatory.**

**Ion Density Observatory.**

\*HAARP(USA)-MU radar(Kyoto Univ.)

= Generating destructive charge density waves(CDW)reaching epicenter by Ionospheric charge density modulation by ground-powered EM beam, earthquake-inducing weapons .

<http://777true.net/Possible-Japan-Independent-Revolution-against-brutal-USA.pdf>

## [1]: Correlation between Solar Activity and Global Earthquake

<https://www.nature.com/articles/s41598-020-67860-3>

(1)**Solar activity changes Ion-sphere concentration toward Inducing Earthquake.**

20-years study by Italian scientists found a clear correlation between proton density and the occurrence of large earthquakes ( $M > 5.6$ ) with a delay of one day.

\*\*This report's terminology are difficult for author limited by a few weeks of the work.

His conclusion on electromagnetic seismology is a hypothesis on Charge Dark Hole of the most close packed pseudo metal atoms generated by ultra high pressure at epicenter.The cause of ultra high pressure of stratum(mass density= $\rho$ ) is caused by gravity= $g$  on the depth= $h(P = \rho hg)$  and stress of bended stratum.

While the counter force is generated by **repulsive of positive charge atoms** packed by the most close.

Thereby annihilation of those positive charge of atoms by **electrons injection** is to act decisively.

→ [3]:Destructing Mechanism by Electro-Charge Catalysis.

Solar large-scale incoming charged particle swarm (CME) acts on earth's magnetic field in charged particle cyclotron motion, resulting in reduction of earth's magnetic field, and entangles with earth's magnetic field lines in spiral motion, gradually(few hours~few days), falling to the south or north poles.

(2)**Strong Ion Sphere Charge Density Belt is to Cause Larger Earthquake.**

but those becomes **charge density belt for a while** in Ion Sphere.It is possible to become source of **CDW radiation** or an **underground electron current** by high voltage one, Both may act on the similar principle as HAARP to destroy epic center by reducing repulsive force of epic center atoms of positive charge by injecting negative charge(CDW or DC current).

**[2]: Charge Particles and Geomagnetism in Ionosphere**

<Those form temporal Charge Belt and reduce geomagnetism intensity>.

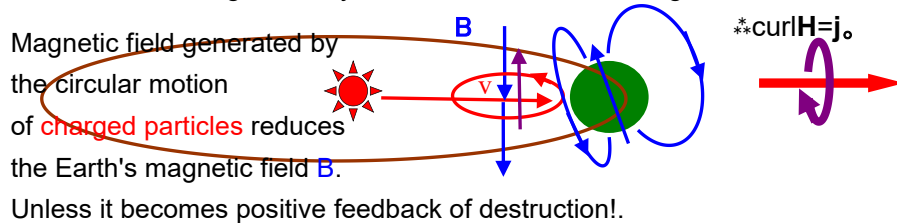
**Sun Storm**=arrival of large-scale charged particles from the sun to the earth.

(1)**All incoming electrons & protons are entangled with geomagnetic lines! , and finally fall to the South or North Pole**<Cosmic Ray Protection Device>.

Geomagnetic field intensity =  $50000 \times 10^{-9} \text{T}$ , proton mass  $m_p = 1.7 \times 10^{-27} \text{ kg}$ ,  
 Electron mass  $m_e = 9 \times 10^{-31} \text{ kg}$ , proton-electron charge  $e = \pm 1.6 \times 10^{-19} \text{ C}$  .  
 Incoming velocity  $v = 30 \text{ km/s} \sim 3000 \text{ km/s}$

Proton gyration radius  $r = mv/eB = 1.7 \times 10^{-27} \times 30 \text{ km/s} / 1.6 \times 10^{-19} \times 5 \times 10^{-5} = 6.4 \text{ m}$   
 $r = mv/eB = 1.7 \times 10^{-27} \times 3000 \text{ km/s} / 1.6 \times 10^{-19} \times 5 \times 10^{-5} = 640 \text{ m}$ .....non-earth penetration  
 Electronic radius of gyration  $r = mv/eB = 9 \times 10^{-31} \times 30 \text{ km/s} / 1.6 \times 10^{-19} \times 5 \times 10^{-5} = 3.4 \text{ mm}$   
 $r = mv/eB = 9 \times 10^{-31} \times 3000 \text{ km/s} / 1.6 \times 10^{-19} \times 5 \times 10^{-5} = 0.34 \text{ m}$

**Electrodynamics for Geomagnetism Reduction.**Equivalent Principle of increase in air charge density = decrease in earth's magnetic field.

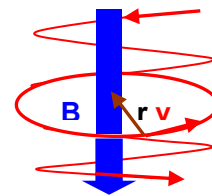


(2)**Spiral Path of Charged Particles come from sun:**

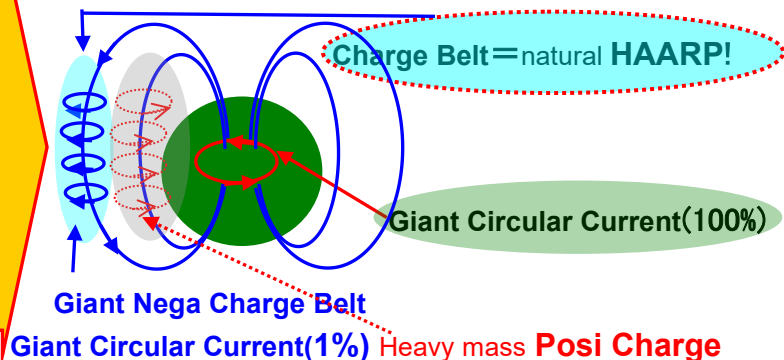
Temporal(less than few days)forming of **Large Scale of Charge Belt** in Ion sphere. This is hazardous to cause earthquake by generating high voltage with strong DC current. Charged particle cycletron motion in a magnetic field::

$e v \times B = (r/r) v^2 / r \dots \dots (2)$

If there are entanglement rotation around the magnetic lines and parallel component velocity, the spiral motion electron will fall into the north or south poles in a few days. .



**Super Current**  
 $J_1 = 1.7 \times 10^{12} \text{ A/m}^2$   
 $\sim 1.7 \times 10^{10} \text{ A/m}^2??$   
 Arriving charged particles are entangled with the earth magnetic lines , and fall to the north or south poles along the magnetic lines without directly entering the earth.



\*Heavy mass positive charges falls earth faster than electron due to shorter path length

### [3]: Destructing Mechanism by Electro-Charge Catalysis.

A matter are bonded by electrostatic force,thereby,charge can destroy chemical bonding.

#### (1)Charge Dark Hole Mechanism.

[http://777true.net/Earthquake-Prediction-by-Phenomena-of-Seismic-Electromagnetism1\\_2.pdf](http://777true.net/Earthquake-Prediction-by-Phenomena-of-Seismic-Electromagnetism1_2.pdf)

(a) The earth surface is negatively charged(electrons)during ordinal peacetime, and as a result, the sky(ionosphere)is positively charged due to electrostatic induction! !

(b)The **refuge electrons** come from the earth's interior, and cosmic rays are also possible.

The  $\pm$  charge group is entwined with earth's geomagnetic field lines and eventually falls to the south or north poles, and finally the charge totals 0 rule.

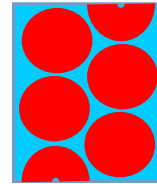
(c) According to the condensed matter physics theorem,

all substances are metallized under ultra-high pressure

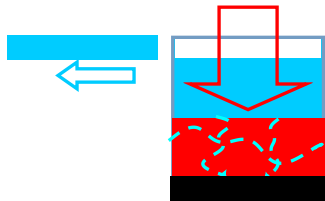
= **pseudo metal**.Roughly speaking, metals are negatively

charged **half free** electrons, and **close packed** positively charged

atomic particles in **electron sea**.A metal bends because the free electrons of the flexible adhesive filled the gaps.If the amount of charge per atom = Ae, the number A times of free electrons = a number of atoms.From now on, the discussion will be simplified if one set of A electrons is counted as one.



#### (d)Charge Dark Hole Mechanism.



pseudo-metal crushed by ultra-high pressure becomes the left figure, Then electric field of positive charge atoms disappears, because it is a uniform space, if a negative charge is virtually placed, there is no force, the same force is received from all directions, **so there is no charge after all.**

Free(refuge)electrons corresponding to the amount of charge in the charge annihilation space are released from the pseudo metal and go head from the pressure hell to the ground.The state of the minimum potential energy distribution with the maximum distance between same charges is **the Earth surface distribution.**

#### (2)Geomagnetic Ring Current<The Positive Charge Center>.

This might be rather untrustable.

There should be chronic electron release from Earth's central charge dark space. The whole average value is charge neutral<but except the ground surface>. However,the opponent is nuclear fusion hell in the charge dark hole, and as the strong fluctuation, escaping from the dark hole = if the hole opens, a positive charge will appear, right? . Considering the positive charge inside the earth right-handed screw rotation <very slow rotation for current generation, but if the charge amount is large>."That's why the north pole is the exit of the magnetic force.lines ". "The center of the earth is positively charged anomaly."

[https://wdc.kugi.kyoto-u.ac.jp/stern-j/dynamos2\\_j.htm](https://wdc.kugi.kyoto-u.ac.jp/stern-j/dynamos2_j.htm)

(3) Electron invasion to epic center toward **charge cancellation and pressure relaxation**.

It is not explosion, but implosion by a catalysis action of electron injection to cause crack!. Whether it is a charge density wave or an earth current, if the electron current reaches the above pseudo metal, the positive charge will be canceled. The annihilation of inter-atomic repulsion works to relax the epic center material pressure triggering earthquake. It is removing anti-slip device. It is making cracks to allow slip initiation.

**[4]: USA-Japan with HAARP-MU radar  
are hiding Electromagnetic Seismology!!.**

*Can you predict earthquakes?*

<https://www.usgs.gov/faqs/can-you-predict-earthquakes>

*No. Neither the USGS nor any other scientists have ever predicted a major earthquake.*

*Do solar flares or magnetic storms (space weather) cause earthquakes?*

<https://www.usgs.gov/faqs/do-solar-flares-or-magnetic-storms-space-weather-cause-earthquakes>

*, it has never been demonstrated that there is a causal relationship between space weather and earthquakes.*

**NOTE:**

This reports fundamental aim is **predicting just before earthquake**, as for which, author tried to make trust-ability. Thereby others could be rather not exact.

## APPENDIX\_1:The Observatory.

### Geomagnetism Observatory

*Magnetic Summary Plots - Last 24 hours<Canada Government>*

<https://geomag.nrcan.gc.ca/plot-tracee/ssp-1-en.php>

\*The observation facility is Canada, but is used in Japan will also be available in the world.

*GOES MAGNETOMETER(NOAA)*

<https://www.swpc.noaa.gov/products/goes-magnetometer>

### Ion Density Observatory

*GOES ELECTRON FLUX*

<https://www.swpc.noaa.gov/products/goes-electron-flux>

*GEONET real-time GPS total electron count map(Japan)*

[https://aer-nc-web.nict.go.jp/GPS/RT\\_GEONET/](https://aer-nc-web.nict.go.jp/GPS/RT_GEONET/)

*Welcome to SWENET Space Weather (European Network)*

<https://web.archive.org/web/20080719143734/http://www.esa-spaceweather.net/swenet/>

*(Russia)*

<http://space-weather.ru/#/>

*(Mexico)*

<https://www.sciesmex.unam.mx/>

## APPENDIX\_2:The Earthquake Precaution Signs.

Charge Black Hole Collapse trigger generating **high voltage** with **underground current** between ground surface(Negative) and epicenter(Positive).

Telling from electromagnetic seismology,just before earthquake,the epicenter had turned charge neutral to **positive** by breaking the charge dark hole. Thus those pull down massive **refugee electrons** on the ground surface.This is nothing,but earthquake underground current<**VAN** earthquake predicting method>.It may be vast environmental change of static Electro-Magnetic(EM)field(DC=direct current,but not alternate one of high frequency).

Note cloud is composed of polarizing water by electric intensity.

Many indicated **cloud anomaly** just before the earthquake at near epicenter.

Many indicated underground current which hit very **sensitive nerves of animals**.

### ① **Anomalies in cloud appearance just before the earthquake.**

<https://www.frontiersin.org/articles/10.3389/feart.2022.812540/full>

*The result showed that when the leading time interval was set to  $23 \leq \Delta T \leq 45$  days and the magnitude is bigger than or equal to M4.7, 70% of earthquakes were preceded by cloud anomalies. The physical mechanism of **cloud anomaly** was likely caused by electric field, which linked active fault, atmosphere circuit conduction current, and cloud anomaly, and thus provides a reasonable hypothesis of cloud anomaly*

*All the stationary clouds which stayed bigger than **3 h** are selected as candidate **anomalies**.*

### **Mechanism of lightning generation**

[https://www.saga-ed.jp/kenkyu/kenkyu\\_chousa/h15/05annzennajikkenkansatu/kaminari040326/400shikumi/frame\\_shikumi.htm](https://www.saga-ed.jp/kenkyu/kenkyu_chousa/h15/05annzennajikkenkansatu/kaminari040326/400shikumi/frame_shikumi.htm)

Charge generation is due to friction between wind drifted particles. In cloud, negative charge heavier particles place lower height, while positive charge lighter particles place upper one. Thus high voltage is generated between those toward lightning.

### **A sign of an earthquake? Seismic cloud?**

#### **Get the right knowledge to take the right action**

<https://shizensaigaichosashi.jp/jishinyochou-jishinkumo-tekisetusunakoudou/>

- Generates at a relatively low position
- It is hard to be blown away by the wind
- Does not disappear without changing shape for a long time
- Not only large earthquakes, but also occur before small earthquakes
- When there are many clouds in the sky, it is difficult to distinguish earthquake clouds.

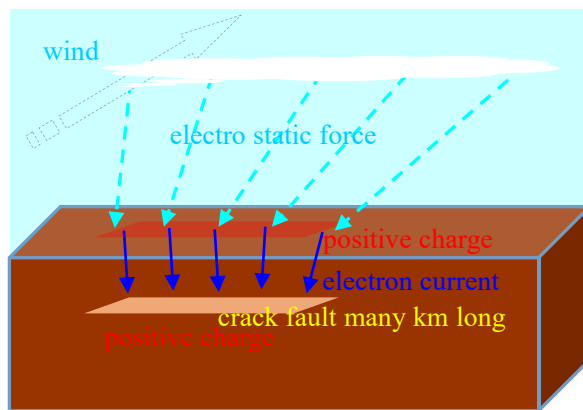
Note just before earthquake, ground charge turned negative to positive !!.

Cloud is composed from water droplet, ice crystal (with nuclei of many dust components), which are polarized in strong electric field. Then attractive force appears between lower part of cloud (negative charge) and ground (positive charge). Cloud is to stop still by the force !!!.

### **Miscellaneous feelings about earthquake clouds**

<http://geosociety.jp/faq/content0421.html>

The type of seismic cloud that appears most frequently is "a thick strip of cloud in a clear sky" (Fig. 1) (according to Kamide, 2005, 70-80% of all seismic clouds).



#### **CAUTION!!!:**

This is too simplified model, but fact is various enough for amateur observer. However it is curious enough, that cloud flow is stopping for a long time, while wind is blowing.,

## ② **Lateral Nerve with Electrical Sensing Ability**

[https://en.wikipedia.org/wiki/Lateral\\_line](https://en.wikipedia.org/wiki/Lateral_line)

[https://en.wikipedia.org/wiki/Electroreception\\_and\\_electrogenesis](https://en.wikipedia.org/wiki/Electroreception_and_electrogenesis)

In particular, aquatic animal(fish) have the ability to perceive electric field changes. Especially **cat fish** is traditionally famous,of which sensitivity were studied earnestly in earthquake rich nation Japan,Also it is told snake,frog with underground hole nest,dog,cat and bird behave singularity at just before earthquake.

## **Earthquake Forecasting by Observing Anomaly of Animal Behavior**

<http://777true.net/Earthquake-forecasting1.pdf>

**Caution:**At that time,author employed "*Piezoelectric Effect*" as the cause of electromagnetic seismology,but turned *Charge Dark Hole theory* in 2012.

[http://777true.net/Earthquake-Prediction-by-Phenomena-of-Seismic-Electromagnetism1\\_2.pdf](http://777true.net/Earthquake-Prediction-by-Phenomena-of-Seismic-Electromagnetism1_2.pdf)

## ③ **Previsões de junho de 2023 - por Jucelino Luz**

<https://www.jucelinodaluz.com.br/previsoes>

This is the site of the great prophet Jucelino Nóbrega da Luz .

<http://www.777true.net/Scientifical-Mechanism-of-Prophecy-by-Paranormalities.pdf>

<http://www.777true.net/Proof-on-God.pdf>

Note,a physical vacuum world is also the almighty one !!.