

## **The Prophesied Ultra Tsunami Attacking the Far East Coast is US. submarine bomb.**

<http://www.777true.net/The-Prophesied-Ultra-Tsunami-Attacking-the-Far-East-Coast-is-US-submarine-bomb.pdf>

This is tsunami(earthquake)weapon used also in the Great Hanshin-Awaji Earthquake in 1995 and the Great Tohoku Earthquake in 2011, both in the reforming governments Japan.

### **③Eliminates terror politics by solidarity of Japan-China-Taiwan-Korea-Philippine.**

[1]: Summary, 2025/2/25

#### **①The current situation the prophetic sea region below are extinct volcano.**

Sudden sea surface eruption Epicenter in the midst Philippine sea plate(PSP)is the kernel of Ryo Tatsuki's Prophecy of the Submergence of the Japanese Archipelago. AS for <Kyushu-Palau Ridge (KPR) = Past submarine volcanic chain> corresponding to ordinal submarine volcanic eruptions, It seems that the presence of **magma** is not confirmed by the **2016 image diagnosis** {(1)KPr40, (1)KPr41}.

#### **②The Possibility of big submarine volcano explosion by the sudden hot spot generation is low.**

The volcanic activity around PSP boundary in critical is all due to high temperature and high pressure **magma** associated with seawater seepage in the trench subsidence. Hydrated magma ([main cause of volcano explosion](#)) is formed underground. Hot spot volcanic eruptions is without water binding, and there has never been a hot spot in PSP. The lower plate subsides from the Pacific Ocean side toward the continent, so it becomes a low-temperature, high-density region. It's just the opposite of a hot spot.

#### **③The prophesied sudden huge sea surface eruption can not be nothing, but **Synthetic Tsunami caused by Man Made Explosion? !!** .**

(1) [1965 Philippine Sea A-4 incident: 1Mt nuclear weapon-carrying plane crashed off the coast of Japan:](#) \*1Mt=  $4.184 \times 10^{15} \text{J} \sim M7 \times 2$ .

*The aircraft, pilot, and nuclear weapons were never recovered. **Number of weapons: Los Alamos National Laboratory documents suggest two weapons were involved.***

(2) First of all, PSP is focal point of the strongest earthquake and volcanic activity on earth.

[Earth's plate tectonics began "more than 3.3 billion years ago" - latest research](#)

(3) Prophecy point is center of the surrounding submarine volcano, and the explosion **shock wave-bubble pulse-tsunami** heads towards the surrounding submarine volcano.

(4) Undersea volcanoes are triggered by undersea hydrogen bombs (1MtonTNT=M7x2).

(5) [There is a possibility causing \*\*interlocking explosion\*\* of submarine volcanoes in tandem.](#)

(a) Undersea volcanic explosions can destroy magma chambers of another submarine volcanoes by generating powerful bubble pulses.

(b) Unlike an earthquake, the interlocking delay time is short.

(c) A super tsunami hits the coast of Far East Asia due to explosions linked to interlocking submarine volcanoes.

(d) There is a possibility that East China Sea sea floor will rise due to softening of the ground due to volcanic explosions?.

## [2]: Supplementary Explanation:

### ① The current situation the prophetic sea region below is extinct volcanoes.

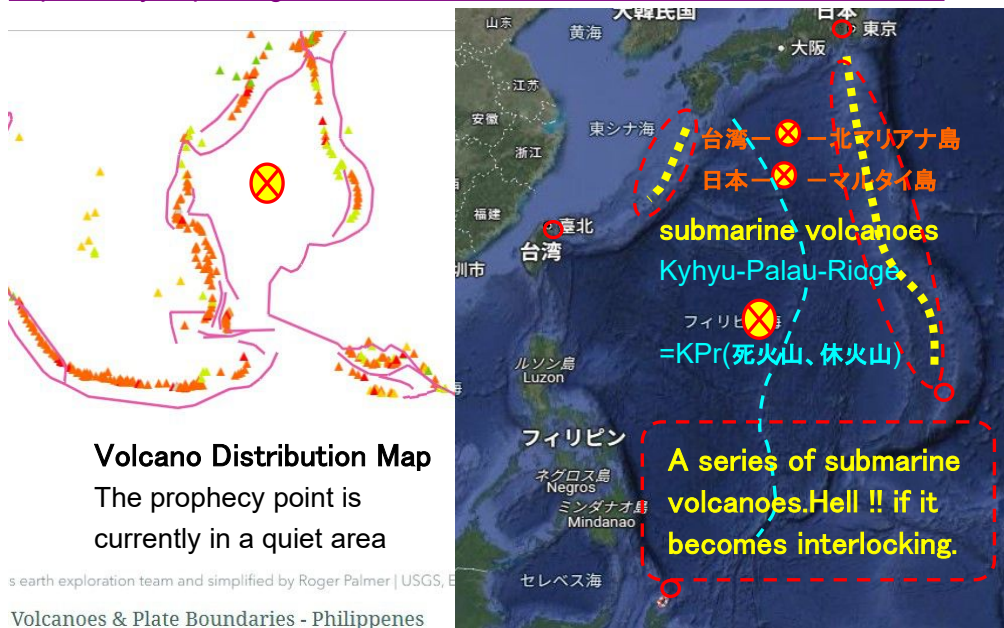
(1) February 2016, Azusa Nishizawa, Kentaro Kaneda, Mitsuhiro Oikawa... <See images of (1)KPr40, (1)KPr41>

We acquired 27 wide-angle seismic profiles to investigate tectonic changes along the **Kyushu-Palau Ridge (KPR)**, a 2,600-km-long remnant island arc in the center of the Philippine Sea Plate. Twenty-six lines were taken along the strike of KPR from 13°N to 31°N, and one was taken along the northernmost tip of KPR. The obtained P-wave velocity is...  
[https://www.researchgate.net/figure/p-models-of-the-Daito-Ridge-and-checkerboard-test-results-and-ray-coverage-a-Vp-models\\_fig1\\_265417720](https://www.researchgate.net/figure/p-models-of-the-Daito-Ridge-and-checkerboard-test-results-and-ray-coverage-a-Vp-models_fig1_265417720)

### (2) Ryo Tatsuki's epicenter of sea surface eruption. ☒

how many seafloor volcano are there in philippine plate

<https://storymaps.arcgis.com/stories/d136fea6ad30480f82359849c52957e7>

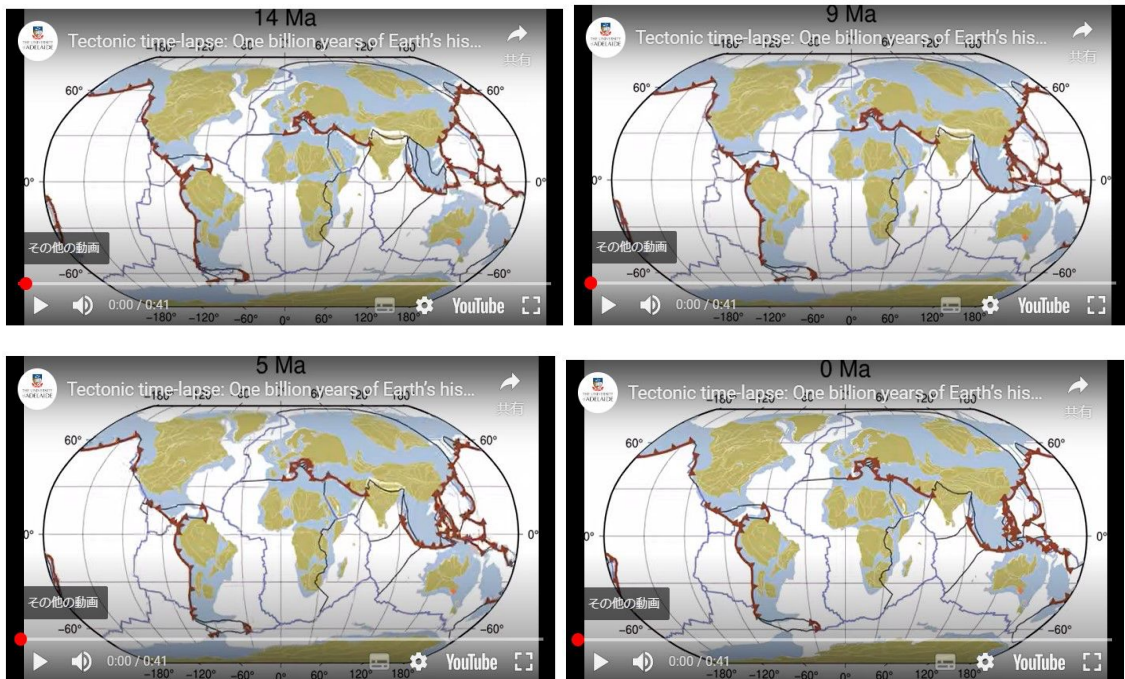


[https://www.researchgate.net/figure/Tectonic-map-The-characteristic-seafloor-topography-of-the-Philippine-Sea-plate-on-the\\_fig5\\_265417720](https://www.researchgate.net/figure/Tectonic-map-The-characteristic-seafloor-topography-of-the-Philippine-Sea-plate-on-the_fig5_265417720)

[Wide-angle refraction experiments in the Daito Ridges region at the northwestern end of the Philippine Sea plate](#)

73,000 years ago, once in a million years, the northernmost point of the volcanic chain ahead of Kagoshima = **Kikai caldera super explosion** sent the paradise of **Jomon civilization** Japan to hell. Many Jomon people became refugees and some of them evacuated to the continent. At the same time, **the Sumerian civilization**, which is the oldest known human civilization in the Middle East, rose. Undersea volcanoes with a ring-shaped distribution are very likely to lead to a similar hell situation in modern now times.

(3) **Extreme instability around the Philippine Sea plate Boundary.**  
**Philippine Plate the Most(maybe) Radical Motion** in the recent past history.



*Earth's plate tectonics began "more than 3.3 billion years ago" - latest research*  
<https://forbesjapan.com/articles/detail/69000>

*Kikai Caldera Comprehensive Survey*

<https://www.jamstec.go.jp/rimg/j/research/kikacaldera/>

*Super gigantic eruption 130,000 years ago, 95,000 years ago, Kikai caldera eruption 7,300 years ago, found to be the world's largest eruption in the past 10,000 years,*

<https://natgeo.nikkeibp.co.jp/atcl/news/24/040400191/>

*The ejecta totaled more than 332 to 457 cubic kilometres. The world's largest Holocene geological*

*VE7=1815 Mount Tambora=1.4×10<sup>20</sup> J*

*VE8=VE7×31.6=1.4×10<sup>21</sup> J.....the strongest in the history.*

*Undersea volcanoes don't just ooze, they also explode*

*Deep-sea volcanoes can explode instead of just oozing, scientists now confirm.*

<https://www.nbcnews.com/id/wbna42378550>

*Undersea volcanoes do not explode.* ← Mistake

*Deep Ocean Volcanoes*

<https://oceantoday.noaa.gov/deepoceanvolcanoes/#:~:text=NARRATOR%3A,deepest%20ocean%20eruption%20ever%20found.>

*Scientists believe that 80 percent of the volcanic eruptions on Earth take place in the ocean. Most of these volcanoes are thousands of feet deep, and difficult to find. But in May of 2009, scientists captured the deepest ocean eruption ever found.*

## ***Largest underwater volcanic eruption recorded***

<https://www.bbc.co.uk/newsround/58763097>

## ***Underwater volcano belched explosive bubbles larger than a stadium***

### ***Secrets of Bogoslof's long 2017 eruption teased out through low-frequency sound***

<https://www.science.org/content/article/underwater-volcano-belched-explosive-bubbles-larger-stadium#:~:text=Historically%2C%20at%20Bogoslof%20and%20other,emerges%20out%20of%20the%20ocean.>

Submarine volcanic explosions the large energy propagation under the sea (Bubble pulse) can trigger volcanic-linked explosions.

### **Undersea Explosion:**

Locally in time and space, water is equivalent to a hard and heavy solid (large radius spherical) bullet, but in the global sense, it is similar to a gas.

Magma Flow Patterns in Dikes: Observations From Analogue Experiments

<https://agupubs.onlinelibrary.wiley.com/doi/full/10.1029/2022JB025463>

Fig2,..... $V_m \sim 0.001, \sim 0.1 \text{ m/s}$  ?

❷ **Possibility of sudden volcano explosion in PHP hot spot is low** <No data found>.

*See images of hotspots around the world,*

<https://finding-geo.info/world/hotspot.html>

*Shocking truth discovered 6,500 meters deep under the sea*

*[Urban legend prophecy occult spiritual mystery]*

[https://www.youtube.com/shorts/wr-yi3\\_qDYo](https://www.youtube.com/shorts/wr-yi3_qDYo)

Changes in seafloor topography that can be seen during dairy hours are a threat! ! ,

*Do super-massive eruptions (volume >1000 km<sup>3</sup>) really exist and will they occur in the future?*

<https://kaken.nii.ac.jp/ja/grant/KAKENHI-PROJECT-22K18726/>

One of the two super-sized eruptions occurred about 2 million years ago in the North American hotspot Yellowstone, Indonesia's Toba volcano is said to have erupted approximately 70,000 years ago.

③ **The prophesied sudden huge sea surface eruption can not be nothing, but **Synthetic Tsunami caused by Man Made Explosion?** ! !<The Method>.**

(1) **Russia's secret tsunami bomb mechanism (How is Russia's secret...**

<https://jp.voicetube.com/videos/137085>

Poseidon bomb=200Mt,,Tsunami 600m.→Tsunami 100m,Bomb=200Mt/(600/100)<sup>2</sup>=5.6Mt.

(2) **Mariana Trench explosion**

<https://what-if.xkcd.com/15/>

$E(0.43 \times 10^6 \text{ TNT}) = PV = P(\text{depth } 3000\text{m}) \times (4/3) \pi R^3.$

Explosion explosion work=(partition to non-heat)x{bomb energy

=E(1Mt=10<sup>6</sup>TNT)=4.2x10<sup>15</sup>J=M7x2}.

$R = \{3E/4\pi P\}^{1/3} = \{3 \times 0.43 \times 10^6 \times 4.2 \times 10^9 \text{ J}/4\pi < 9.8 \times 10^3 \text{ kg} \times 3000/\text{m}^2 >\}^{1/3} = 240\text{m}$

(3) A hole with a diameter of 500m occurs, leading to a large tsunami from flowing into the water.

(4) Initial shock wave and bubble pulse attack volcanic magma to activate.,

(5) ***Undersea volcanoes don't just ooze, they also explode***

***Deep-sea volcanoes can explode instead of just oozing, scientists now confirm.***

<https://www.nbcnews.com/id/wbna42378550>

Initial shock wave and bubble pulse

(6) **Undersea volcanic explosions generate initial shock waves and bubble pulses,**

*The shock wave caused by a bubble pulse has a greater destructive power than the shock wave caused by an explosion, and the destructive force against ships and underwater structures is due to this bubble pulse.*

(7) ***Underwater volcano belched **explosive bubbles** larger than a stadium***

***Secrets of Bogoslof's long 2017 eruption teased out through low-frequency sound***

<https://www.science.org/content/article/underwater-volcano-belched-explosive-bubbles-larger-than-stadium#:~:text=Historically%2C%20at%20Bogoslof%20and%20other,emerges%20out%20of%20the%20ocean.>

Submarine volcanic explosions the large energy propagation under the sea (Bubble pulse) can trigger volcanic-linked explosions.

**Undersea Explosion.;**

Locally in time and space, water is equivalent to a hard and heavy solid (large radius spherical) bullet, but in the global sense, it is similar to a gas.

④The prophesied sudden huge sea surface eruption can not be nothing,  
but **Synthetic Tsunami caused by Man Made Explosion? !!** <The Motive:>.

Was the 2011/3/11 earthquake a dry run or its final strategy? !! ,

Why Japan (Far East Asia=China,Korea,....)? !!!

K.Marx and ancient Jomon Japanese are brother in **Class less Ideology**,however both they has been being hated by the **Nobility-Wealthiest Hereditary Power** now ruling the world.

\*The original *Jomon* Japanese had established 10000 years peace civilization **without class regime**,which was broken by the emigrants(~BC300) from the continent,after the kingdom long era(~AC1200),at last,samurai Tokugawa ruling had established 260 years peace civilization(1600~1868).The modern kingdom-military nation Japan(1868~now)has been being **ruled by not Japanese**.The verification especially as for the ancient and now history,. etc ...would take long time,so these details is deleted at this time.

#### **POSTSCRIPT:**

It was the time of Vietnam war with strong anti-communism conscious in conservative Americans,but with anti Vietnam war in the young Americans.Once the former planed eliminating Soviet Russia by Nukes.Thereby it is no so doubt that such they might have sat Nuke tsunami weapon to eliminate Far East(China,...).In world war the 2<sup>nd</sup>,USA tried experiment on tsunami weapon in Australia.They have sufficient the skill.

However especially note,now America by the Trump presidency began drastic change in CIA-global war strategy toward no war by USA.Thereby we entirely hope he would eliminate such wrong plan of tsunami weapon against Far east Nation people.Also note such elder President would take strong hatred by the military industry profit complex with the many cronies,so many warn his again assassination not before long. Assassination tool is not only gun bullets,but also various insidious methods both by physical and psychological.

Now we need to show that we are doing work for everyone and deserves to live.

## APPENDIX-1:

# *Maybe if We talk about it, it won't happen?!!*

*[Urgent Warning] Japan's worst predictive dream seen by children Japan's extinction starting in 2024 is already in motion... [Urban Legends Prophecies Disaster Prevention]*  
<https://www.youtube.com/watch?v=9FrmB4eBAbs>



【緊急警告】子供達が見た日本最悪の予知夢 2024年から始まる日本の消滅はすでに動き出している...【都市伝説 予言 防災】

The third eye (spiritual world intelligence) degenerates as you become an adult.  
However it remains for children (stronger for girls), strong ancestral spirits.  
Also deep mercy in heaven will assist the prophecy of salvation. ....

# If you talk about it, it might not happen!!

Adults are united in awakening to the truth.  
If we move, the catastrophe will be unnecessary! !

## APPENDIX-2: Minimum Learning on Geology.

### ① Minimum Learning on Geology Dynamics.

#### Structure of the Earth

<https://www.bbc.co.uk/bitesize/articles/z9qpsk7#zpgwqfr>

the outside are the **crust** –the rocky outer layer. the **mantle** – the semi-solid middle layer. the **core** - inner core(solid) and outer core(liquid-Fe-Ni).

#### plate-lithosphere

[https://en.wikipedia.org/wiki/Plate\\_tectonics](https://en.wikipedia.org/wiki/Plate_tectonics)

see the Diagram of the internal layering of Earth (lithosphere,,asthenosphere)

### ② Plate Tectonics <see the 1minutes video>

<https://pnsn.org/outreach/about-earthquakes/plate-tectonics#:~:text=The%20Pacific%20Plate%20is%20moving,Ocean%2C%20the%20Mid%20Atlantic%20Ridge.>

Volcanism and seismic events are ruled by **Plate Tectonics**.it is **heat convection dynamics** toward entirely **heat dissipating** to outer space from heat source core of earth.

☠️; Although, recent global warming had become broken the **poop dissipating**. What happen!

### ③ Magma chamber

[https://en.wikipedia.org/wiki/Magma\\_chamber](https://en.wikipedia.org/wiki/Magma_chamber)

**Supervolcano eruptions** are possible only when an extraordinarily large magma chamber forms at a relatively shallow level in the crust. the rate of magma production is quite low, around 0.002 km<sup>3</sup>/year, sufficient magma for a supereruption takes 10<sup>5</sup> to 10<sup>6</sup> years.

#### Critical Magma chamber Volume =V<sub>mc</sub> of Supervolcano Eruption.

$$V_{mc}=0.002 \text{ km}^3/\text{y} \times (10^5 \sim 10^6) = 2.0 \times (10^2 \sim 10^3) \text{ km}^3/.$$

P<sub>m</sub>=200 to 250 MP.....There are two magma chambers: approximately 10km and 5km deep.

$$U_m = V_{mc} \rho_m C_{pm} T_m = 5.8 \times 10^{17} \times 500^\circ\text{C} = 2.9 \times 10^{20} \text{ J} / 10^5 \text{ to } 10^6 \text{ years} \rightarrow J_m = 2.9 \times 10^{14} \sim 10^{15} \text{ J/y}$$

..Largest volcanic eruption **1.27×10<sup>20</sup> J** ..... 1815 eruption of Mount Tambora

$$T_m = 650-1300^\circ\text{C}; \rho_m = 2,400 \text{ kg/m}^3; C_{pm} = 1.2 \times 10^3 \text{ J/kgK}; k_m = 1.2 \text{ W/mK}.$$

The true identity of the "amazing eruption" that killed 90% of humanity 70,000 years ago

<https://diamond.jp/articles/-/358922>

magma chambers lifespan 1.x10<sup>6</sup> years, a chain of volcanoes has a history of 10<sup>5</sup> years or more. The world's largest caldera in Indonesia's **Toba Volcano** erupted 74,000 years ago.

The first eruption 1.2x10<sup>6</sup> years ago. A large-scale eruption occurred 5x10<sup>5</sup> years ago in the northwest of the caldera. Last eruption 7.4,x10<sup>4</sup> years ago.

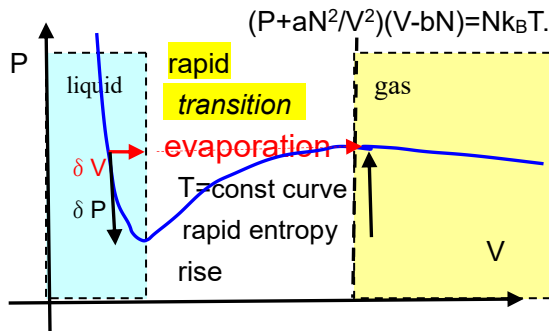


**APPENDIX3::Liquid Magma Evaporation toward VOLCANO ERUPTION !.**  
**Small displacement** in MAGMA Volume cause large pressure fluctuation ,which cause **explosive MAGMA Evaporation** toward Volcano Eruption.

Volcano eruption is caused by temperature rise,or pressure down with the magma critical { $T_c, P_c$ }.

(1) **Liquid Gas Phase Transition of MAGMA by Hitting a Seismic Force.**

Van Der Waals State Equation tells small volume change=  $\delta V$  causes large pressure one=  $\delta P$  toward the **sudden evaporation as irreversible process !**



It's that thing when you open the lid of a carbonated drink and the volume increases slightly, causing bubbles to gush out all at once.

\* $H_2O + CO_2 \rightleftharpoons H_2CO_3$ ..... carbonated drink  
 \* $H_2O + SiO_2 \rightleftharpoons H_2SiO_3$ ..... siliconated **MAGMA**

(2)  $\delta V$  is caused by external force of such low frequency Seismic force.

**An eruption may occur within 24 hours**

*Volcanic disasters and eruption prediction <Warning criteria used to predict eruptions at Mt. Pinatubo>*,  
<http://www.kazan-g.sakura.ne.jp/J/koukai/98/ida.html>

*level 4: Strong activities such as harmonic tremors and low-frequency earthquakes,*  
*An eruption may occur within 24 hours.*

$\delta V$  is caused toward eruption tunnel due to shocking seismic wave by earthquake or volcano eruption compressing and squeezing out magma from a volcano when magma state is in near critical state= $\{T_c, P_c\}$ .

(3)  $\delta V$  is caused by external force **cracking the solid surface** for magma leakage.

This is to accomplish by seismic shock wave of **high frequency component.**

(4) **Interlocking Mechanism between Volcanoes & Earthquakes.**

**☞; This is one of most important kernel item in this report !!!.**

*For those interested in the interlocking phenomena between volcanoes and earthquakes:*  
[https://sakuya.vulcania.jp/koyama/public\\_html/volcanology/rendo.html](https://sakuya.vulcania.jp/koyama/public_html/volcanology/rendo.html)

**Volcanic eruptions and crustal stress fields - conventional research**

*The existence of linked phenomena between eruptions and earthquakes or between eruptions has been pointed out for a long time (Taneda, 1948, 1975; Sameshima, 1953).....*

*We actually calculated the changes in the crustal strain field around the earthquake fault caused by the **Philippine earthquake**, and thought that the increase in compressive strain near the **Pinatubo volcano** squeezed out the magma.*

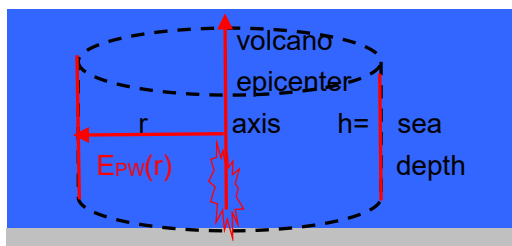
**APPENDIX4::Magma Volume Rise= $\delta V$  by Pulse Wave Hitting in submarine.  
**Rapid Interlocking between Volcano & Volcano.****

Seafloor Volcano Eruption Generates Stronger **Bubble Pulse** .

**Volcanoes make massive undersea bubbles – and scientists are listening**

<https://abcnews.go.com/Technology/volcanoes-make-massive-undersea-bubbles-scientists-listening/story?id=66535341#:~:text=Their%20results%2C%20published%20in%20the,considered%20on%20the%20smaller%20side>

Interlocking between earthquake & earthquake is not rapid. Time between epicenter breaking down and tremolo starting is long time<few days,year>. While, displacement in magma chamber shape with magma liquid leaking is rapid(<day?).



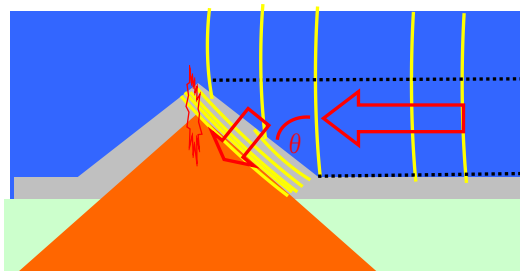
**Volume Rise= $\delta V$  by Pulse Wave Hitting**

Intermediate volcanic eruption  $1.5 \times 10^{18} J$

$E_{VC}(r=0)$ =seafloor volcano energy  $\sim 10^{18} J$ ??

$K_{PW}$ =bubble pulse wave ratio  $\sim 1/10$ ?

$E_{PW}(r)=K_{PW}E_{VC}(r=0)/2\pi rh$  ;Cylinder Wave Energy Density.



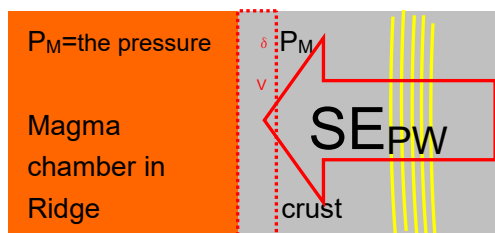
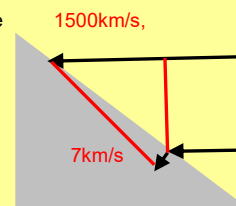
Velocity of sea water sound=1500km/s,

while that of crust seismic P wave =7km/s. Then refraction causes

perpendicular incident

toward just magma

the coming epicenter.



**Volume Rise= $\delta V$  by Pulse Wave Hitting**

{ $E_{VC}(r=0)$ =volcano energy, $K_{PW}$ =pulse wave ratio}

$E_{PW}(r)=K_{PW}E_{VC}(r=0)/2\pi rh$  ;Cylinder Wave Energy Density.

$E^*_{PW}=\cos \theta E_{PW}(r)$  :  $\theta$ =refraction seismic P wave?

$\delta V=S\delta x$ .....volume rise

$SE^*_{PW}=P_M\delta V=P_M S\delta x. \Rightarrow \delta x=E^*_{PW}/P_M$

**An Example Calculation)**

$E_{VC}(r=0)$ =seafloor volcano energy  $\sim 2\pi 10^{17} J$ ?  $\rightarrow K_{PW}=0.1, h=2.5km, r=40km$ ?  $\rightarrow E_{PW}(r)=10^8 J/m^2$ .

$\rightarrow \cos \theta =0.1?$   $\rightarrow E^*_{PW}=10^7 J/m^2$ .  $\rightarrow P_M=g\{ \rho (sea)d(sea depth)+ \rho (crust)d(crust depth)\}$

$P_M=9.8\{1030kg/m^3 \times 2.5km\}+3000kg/m^3 \times 10km\}=3.2 \times 10^8 P$ .  $\rightarrow \delta x=E^*_{PW}/P_M=0.03m$ ???

## **APPENDIX5::2011/3/11,US NAVY attacked Japan by earthquake weapon ..**

This reports reveal and blame US NAVY by their damned crime against Japan(and Asia). Thereby,American must take the serious responsibility to pay the compensation.Also 1995,Hanshin-Awaji Great Earthquake was the weapon attack to innocent Japanese. Trump Presidency is innocent for the crimes,but neglecting the crime is crime.

### ***U.S. military earthquake weapon attack = 3/11 The truth behind the collapse of the Tohoku Fukushima earthquake!***

[http://www.777true.net/the-convergence-to-genuine\\_J95-Reverification-on-the-Criminal-3\\_11.pdf](http://www.777true.net/the-convergence-to-genuine_J95-Reverification-on-the-Criminal-3_11.pdf)

On 3/11, natural seismic force was artificially induced (electromagnetic seismic weapon HAARP), and the Tohoku Fukushima coast was destroyed as a result of tsunami synthesis using multiple remote-controlled submarine-based bombs in synchronization with the main shock. The damage caused by the main shock was surprisingly small. The US possesses special nuclear bomb and earthquake weapon technology, and **the destruction of Fukushima in the Tohoku region on 3/11 is a US military war crime!!!**,

#### **The hidden Cause of attack against Fukushim NP(2011/3/11).**

[http://www.777true.net/the-convergence-to-genuine\\_J20-the-principal-criminal-Rockefeller.pdf](http://www.777true.net/the-convergence-to-genuine_J20-the-principal-criminal-Rockefeller.pdf)

The November 2002 issue of the monthly magazine ``Zaikai-Tenbou=Financial Outlook" contained an article that cannot be missed. The article is ``The complete picture of the CIA's operation against Japan to manipulate Japan's electric power business policy." By the way, there are rumors that the CIA (U.S. Central Intelligence Agency) is an armada of the Rockefeller conglomerate (U.S. oil capital). This is because the Rockefeller Foundation makes large donations to the CIA. According to this article, the following recommendations were made in the CIA's investigation report on Japan's energy situation (February 2000).

"In order to prevent Japan's national power from growing further and from becoming **anti-American** in the future, **it is necessary to handcuff Japan in the energy sector for a long period of time**. Nuclear power generation in Japan already accounts for more than 30% of Japan's power sources. Therefore, it would be effective to reduce the power of **Tokyo Electric Power Company**, which controls Japan's nuclear technology. Tokyo Electric Power Company is Japan's most wealthy company and is a leader in the economic and financial worlds. It is also a powerful company with strong public trust. In order to prevent Japan from becoming nuclear-armed, it is necessary to significantly slow down the development of nuclear power generation technology

The related Articles::

[http://www.777true.net/the-convergence-to-genuine\\_J72-Rockefeller-Must-Pay-Damage-Fukushima.pdf](http://www.777true.net/the-convergence-to-genuine_J72-Rockefeller-Must-Pay-Damage-Fukushima.pdf)

Earthquake Weapon HAARP the **charge density wave** radiator **destructing epicenter chemical bonding**.

[http://www.777true.net/the-convergence-to-genuine\\_J54-HAARP-Plasma-Oscillation-Mechanism.pdf](http://www.777true.net/the-convergence-to-genuine_J54-HAARP-Plasma-Oscillation-Mechanism.pdf)

A chemical binding is due to electrostatic force between electron and nuclei,which is broken by **catalyzer**.

[http://www.777true.net/the-convergence-to-genuine\\_J53-HAARP-Evidences-of-the-Mechanism.pdf](http://www.777true.net/the-convergence-to-genuine_J53-HAARP-Evidences-of-the-Mechanism.pdf)

[http://www.777true.net/the-convergence-to-genuine\\_J48-Water-Injection-Earthquake-the-Mechanism.pdf](http://www.777true.net/the-convergence-to-genuine_J48-Water-Injection-Earthquake-the-Mechanism.pdf)

[http://www.777true.net/the-convergence-to-genuine\\_J43-Earthquake-Weapon.pdf](http://www.777true.net/the-convergence-to-genuine_J43-Earthquake-Weapon.pdf)

[http://www.777true.net/From-the-9\\_11-to-the-3\\_11-Japan-Earthquake-Massacre.pdf](http://www.777true.net/From-the-9_11-to-the-3_11-Japan-Earthquake-Massacre.pdf)

<http://www.777true.net/HAARP-the-Earthquake-Weapon-Mechanism.pdf>